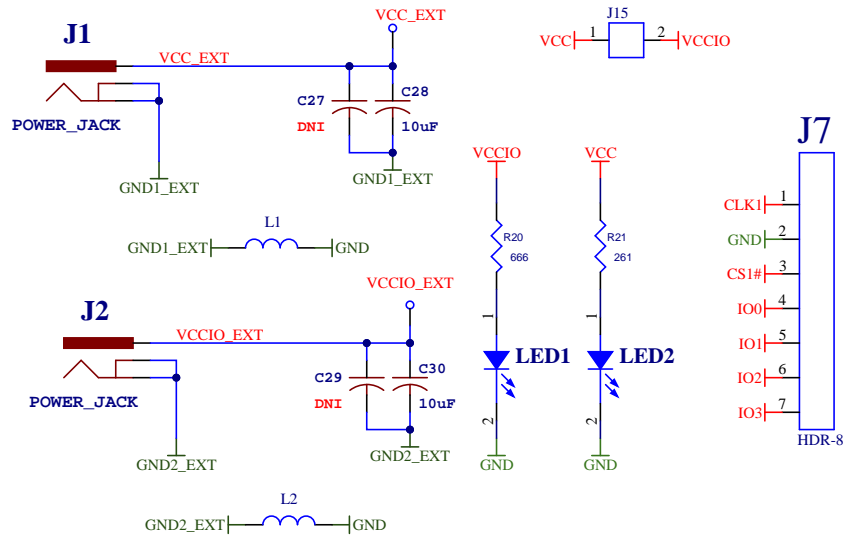
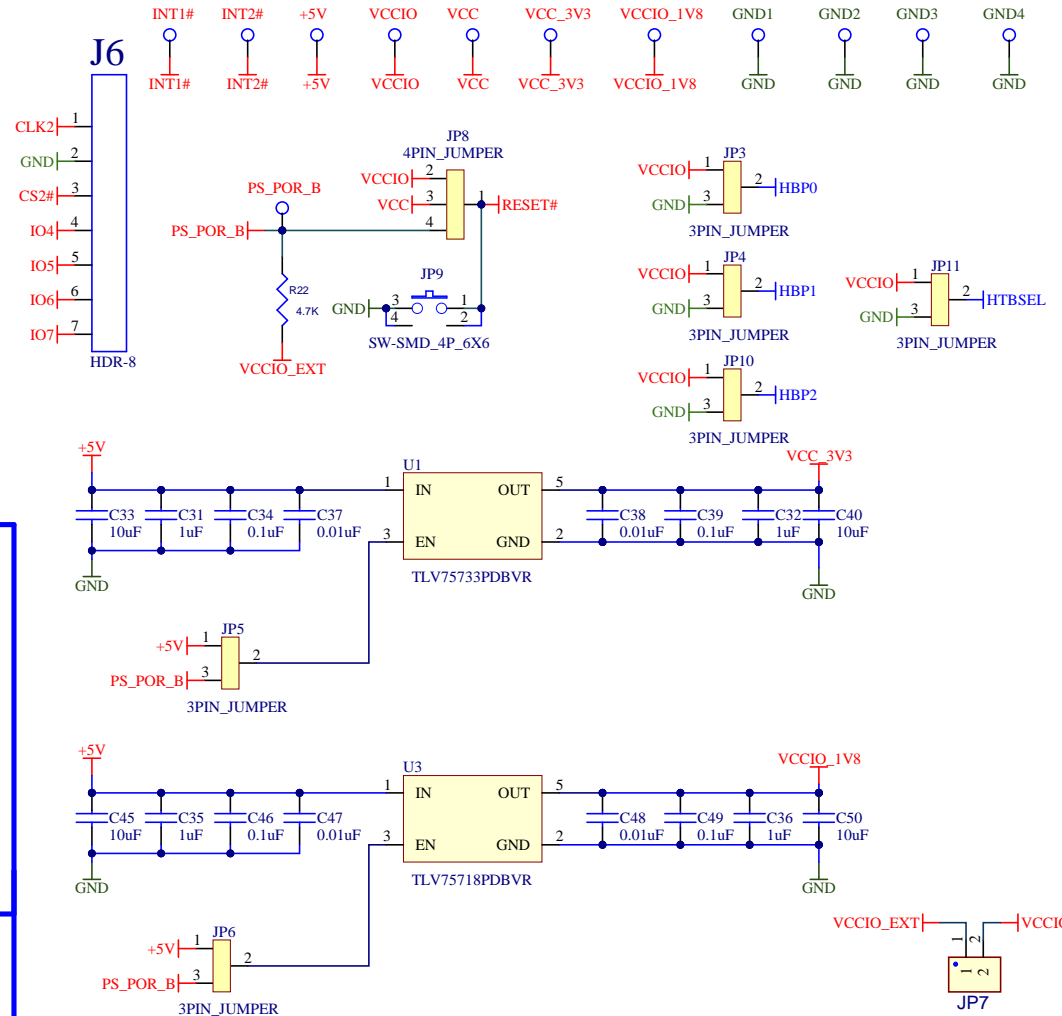
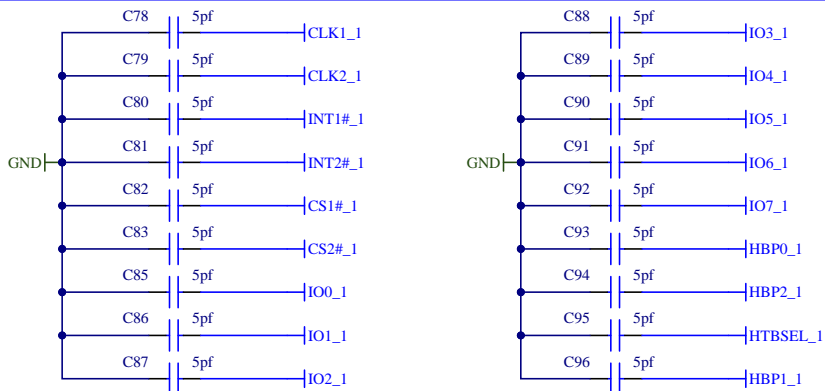
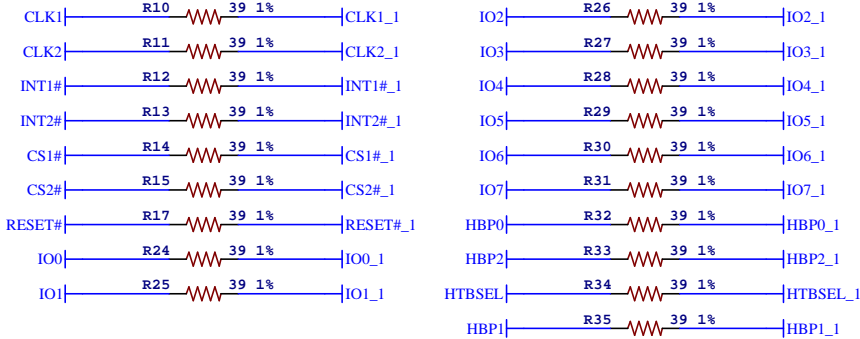


		TITLE: 96BGA XILINX				
	DESIGNED BY: Quoc Ho	DATE: 5/14/2024	CUST. P/N:	CUST. CONTACT:		
	CHECK BY:	DATE: 5/14/2024	CUSTOMER: AVALANCHE			
JOB# QDS10984_AVL	APPROVE BY:	DATE: 5/14/2024	SCALE: NONE	SIZE : B	REV B	SHEET: 1 OF 3



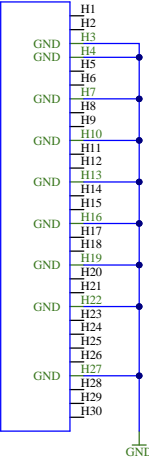
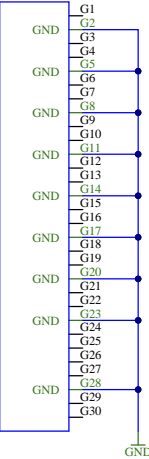
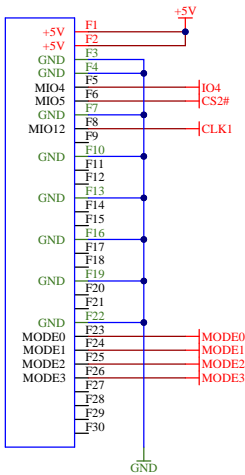
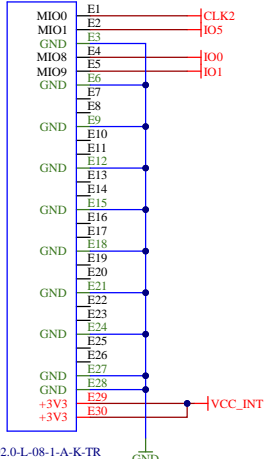
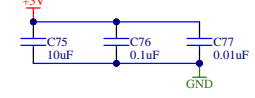
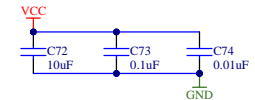
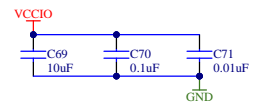
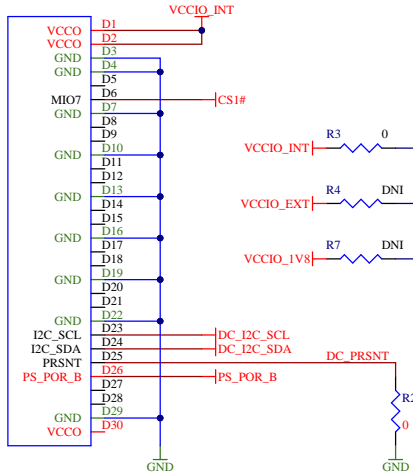
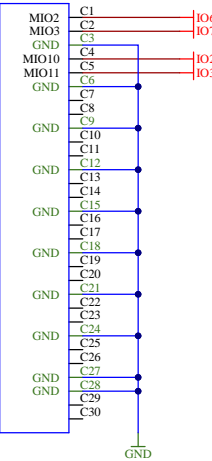
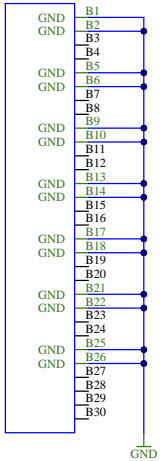
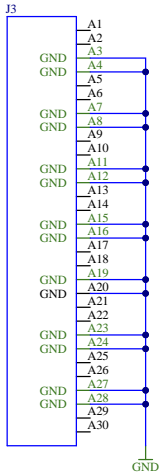
## Source Termination 39 Ohms



		TITLE: 96BGA XILINX				
	DESIGNED BY: Quoc Ho	DATE: 5/14/2024	CUST. P/N:		CUST. CONTACT:	
	CHECK BY:	DATE: 5/14/2024	CUSTOMER: AVALANCHE			
JOB# QDS10984_AVL	APPROVE BY:	DATE: 5/14/2024	SCALE: NONE	SIZE : B	REV B	SHEET: 2 OF 3

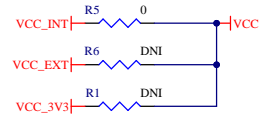
DC CONNECTOR

PAGE03

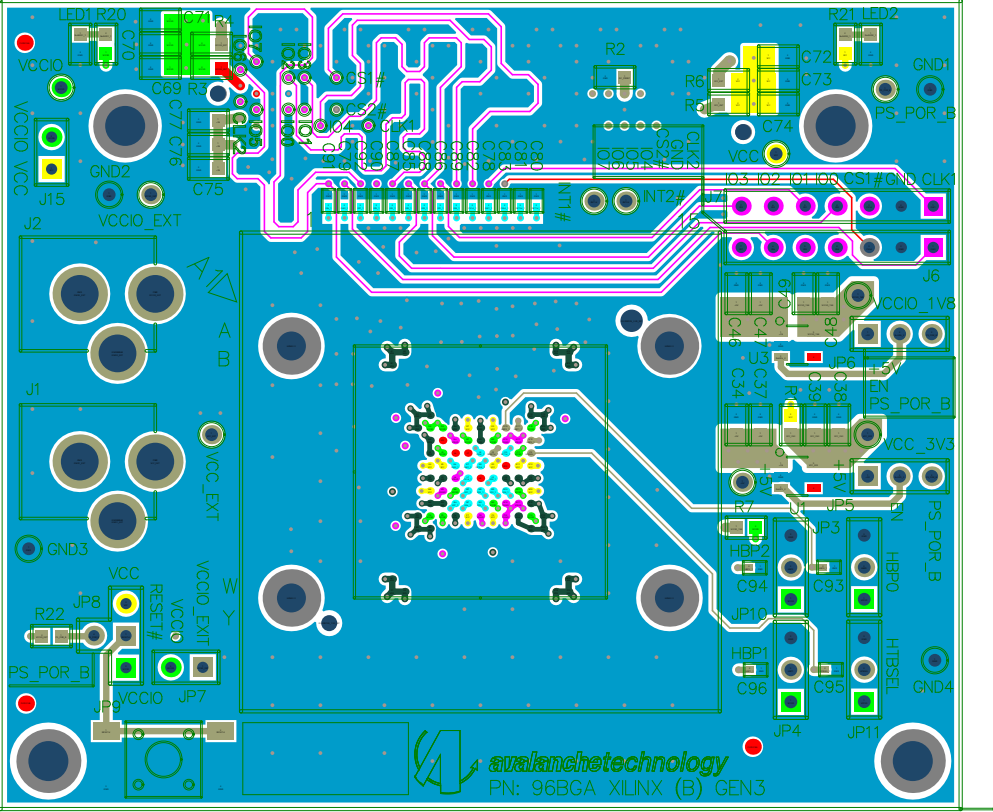


Original Netname	New net name
PMC_MIO12_500	CLK1
PMC_MIO8_500	IO<0>
PMC_MIO10_500	IO<2>
PMC_MIO9_500	IO<1>
PMC_MIO7_500	CS1#
LS_PS_POR_B_PMC0	RESET#
PMC_MIO11_500	IO<3>
PMC_MIO0_500	CLK2
PMC_MIO4_500	IO<4>
PMC_MIO2_500	IO<6>
PMC_MIO1_500	IO<5>
PMC_MIO5_500	CS#2
LS_PS_POR_B_PMC0	RESET#
PMC_MIO3_500	IO<7>

SEAM-30-02.0-L-08-1-A-K-TR



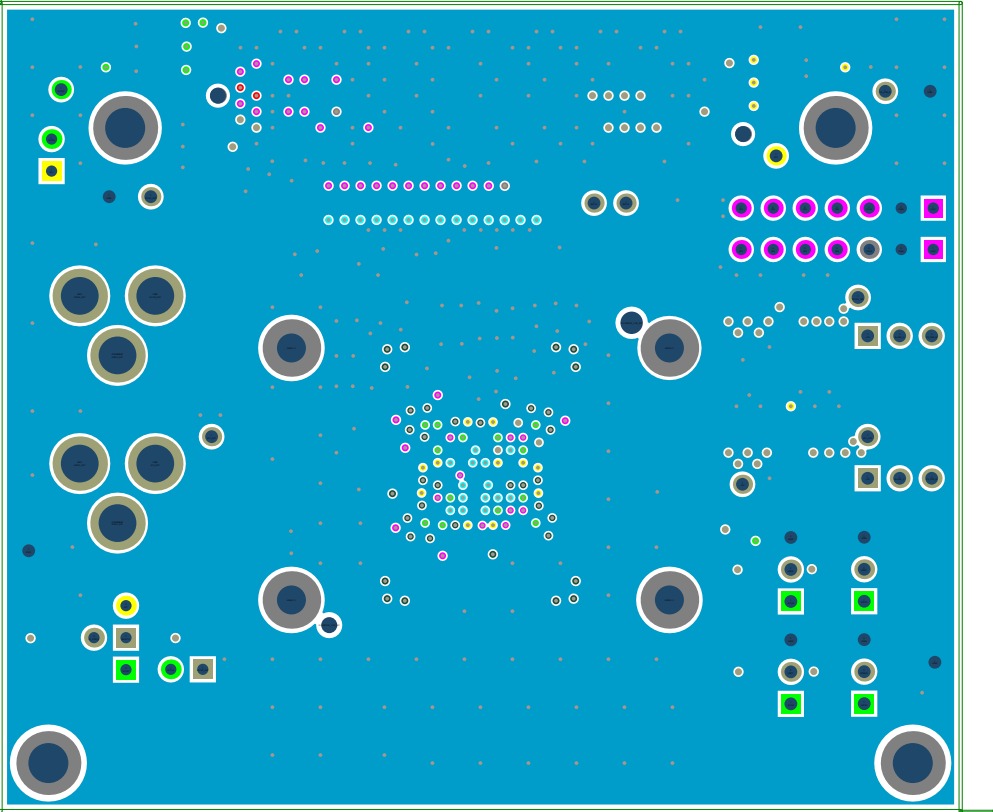
TITLE: 96BGA XILINX					
DESIGNED BY: Quoc Ho	DATE:	5/14/2024	CUST. P/N:		CUST. CONTACT:
	CHECK BY:	DATE:	CUSTOMER: AVALANCHE		
JOB#	APPROVE BY:	DATE:	SCALE: NONE	SIZE : B	REV B
QDS10984_AVL		5/14/2024	SHEET: 3 OF 3		



Title:	96BGA_XILINX REV.B	
Customer:		
Contact:		
CUST P/N#:		
JOB#:	QDS11249_AVL (V0.9) GEN3	
ENG./Designer:		
Scale:	1 TO 1	
View:	TOP VIEW	
DATE PLOTTED: 5/14/2024		
PADMASTER	DRILLMASTER	
TOP		
TOP SILKSCREEN		

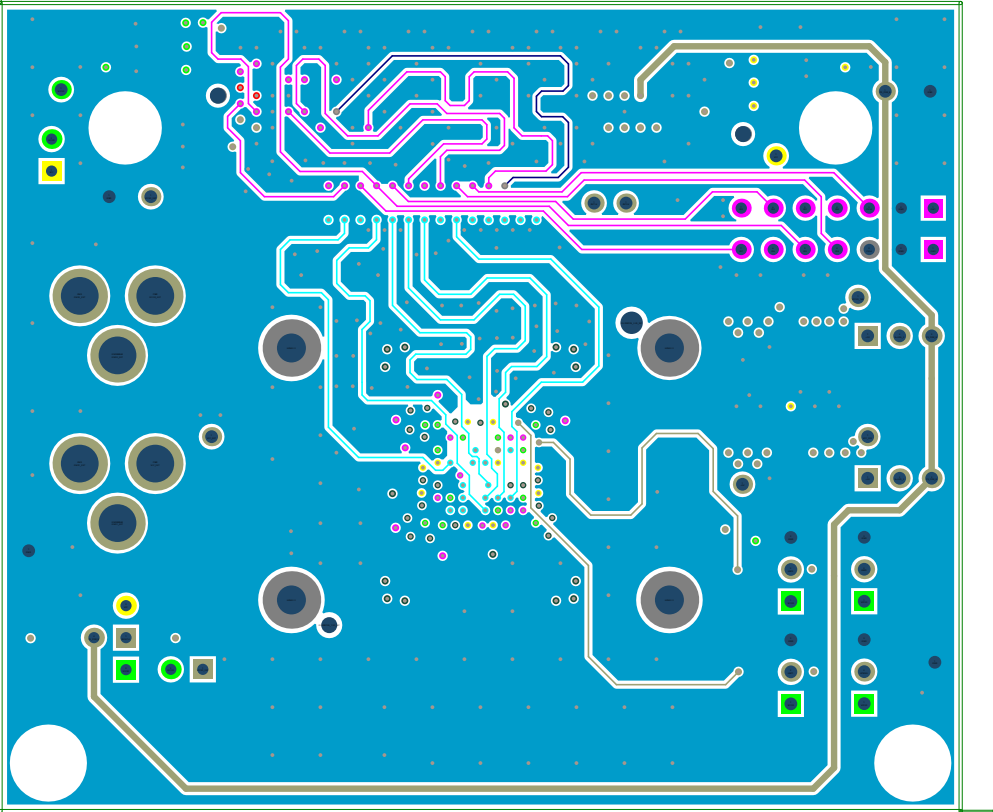
PROPRIETARY NOTICE

THIS DOCUMENT/FILE AND THE TECHNICAL DATA HEREIN DISCLOSED ARE PROPRIETARY TO Q DESIGN AND SHALL NOT BE DUPLICATED USED, RELEASED, OR DISCLOSED IN WHOLE OR IN PART WITHOUT EXPRESSED WRITTEN PERMISSION.



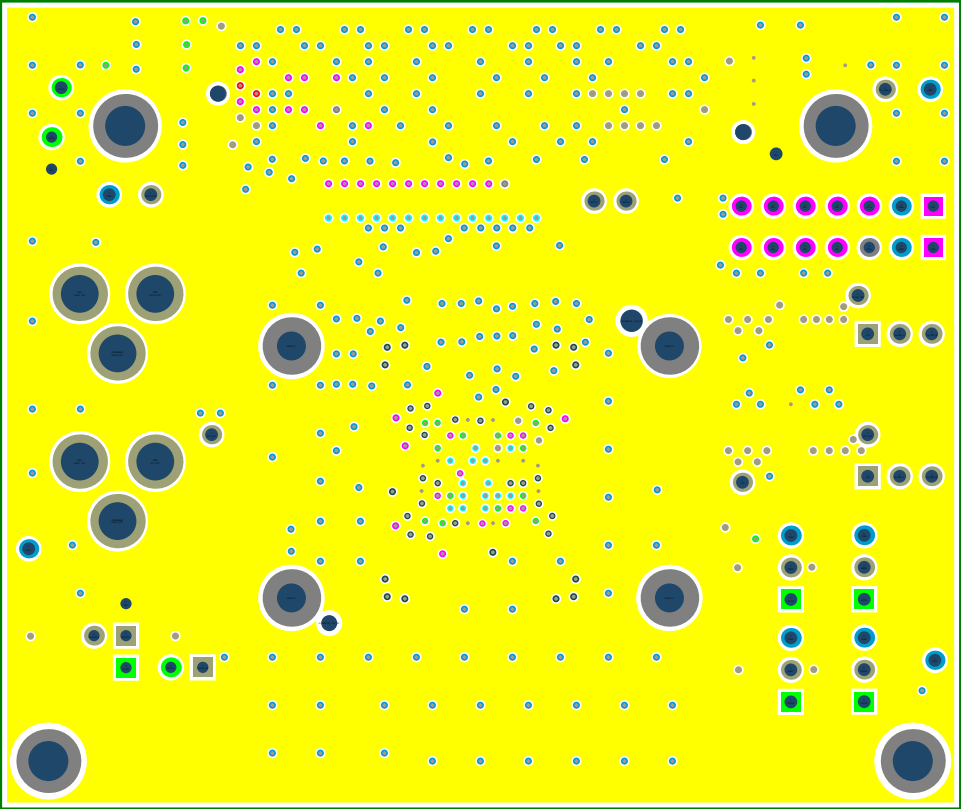
Title:	96BGA_XILINX REV.B
Customer:	
Contact:	
CUST P/N#:	
JOB#:	QDS11249_AVL (V0.9) GEN3
ENG./Designer:	
Scale:	1 TO 1
View:	TOP VIEW
DATE PLOTTED: 5/14/2024	
PADMASTER	DRILLMASTER
	GND1

PROPRIETARY NOTICE  
THIS DOCUMENT/FILE AND THE TECHNICAL  
DATA HEREIN DISCLOSED ARE PROPRIETARY  
TO Q DESIGN AND SHALL NOT BE DUPLICATED  
USED, RELEASED, OR DISCLOSED IN  
WHOLE OR IN PART WITHOUT EXPRESSED  
WRITTEN PERMISSION.



Title:	96BGA_XILINX REV.B
Customer:	
Contact:	
CUST P/N#:	
JOB#:	QDS11249_AVL (V0.9) GEN3
ENG./Designer:	
Scale:	1 TO 1
View:	TOP VIEW
DATE PLOTTED: 5/14/2024	
PADMASTER	DRILLMASTER
INTERNAL1	

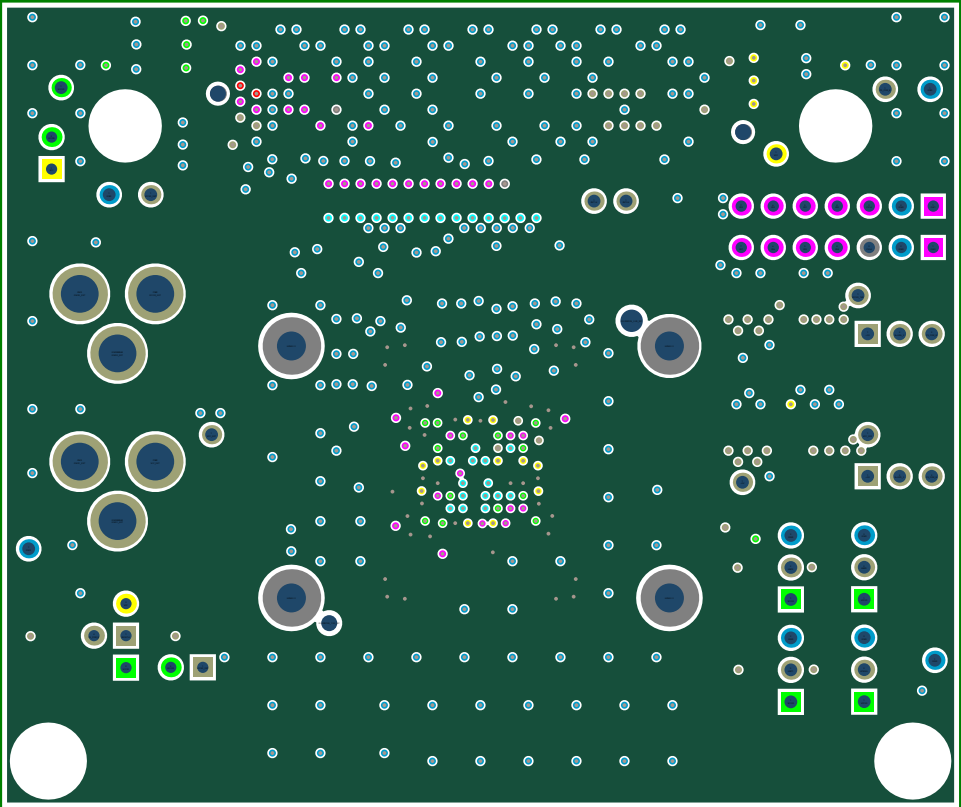
PROPRIETARY NOTICE  
THIS DOCUMENT/FILE AND THE TECHNICAL  
DATA HEREIN DISCLOSED ARE PROPRIETARY  
TO Q DESIGN AND SHALL NOT BE DUPLICATED  
USED, RELEASED, OR DISCLOSED IN  
WHOLE OR IN PART WITHOUT EXPRESSED  
WRITTEN PERMISSION.



Title:	96BGA_XILINX REV.B
Customer:	
Contact:	
CUST P/N#:	
JOB#:	QDS11249_AVL (V0.9) GEN3
ENG./Designer:	
Scale:	1 TO 1
View:	TOP VIEW

DATE PLOTTED: 5/14/2024	
PADMASTER	DRILLMASTER
PWR1	

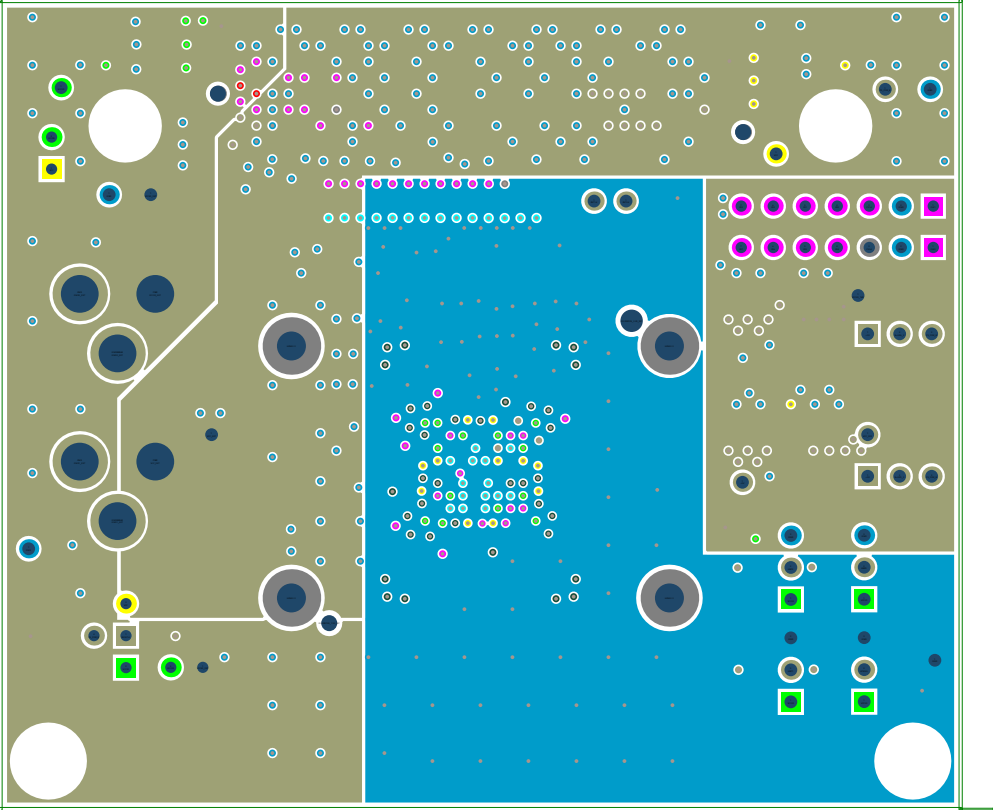
PROPRIETARY NOTICE  
THIS DOCUMENT/FILE AND THE TECHNICAL  
DATA HEREIN DISCLOSED ARE PROPRIETARY  
TO Q DESIGN AND SHALL NOT BE DUPLICATED  
USED, RELEASED, OR DISCLOSED IN  
WHOLE OR IN PART WITHOUT EXPRESSED  
WRITTEN PERMISSION.



Title:	96BGA_XILINX REV.B
Customer:	
Contact:	
CUST P/N#:	
JOB#:	QDS11249_AVL (V0.9) GEN3
ENG./Designer:	
Scale:	1 TO 1
View:	TOP VIEW
DATE PLOTTED: 5/14/2024	
PADMASTER	DRILLMASTER
	GND2

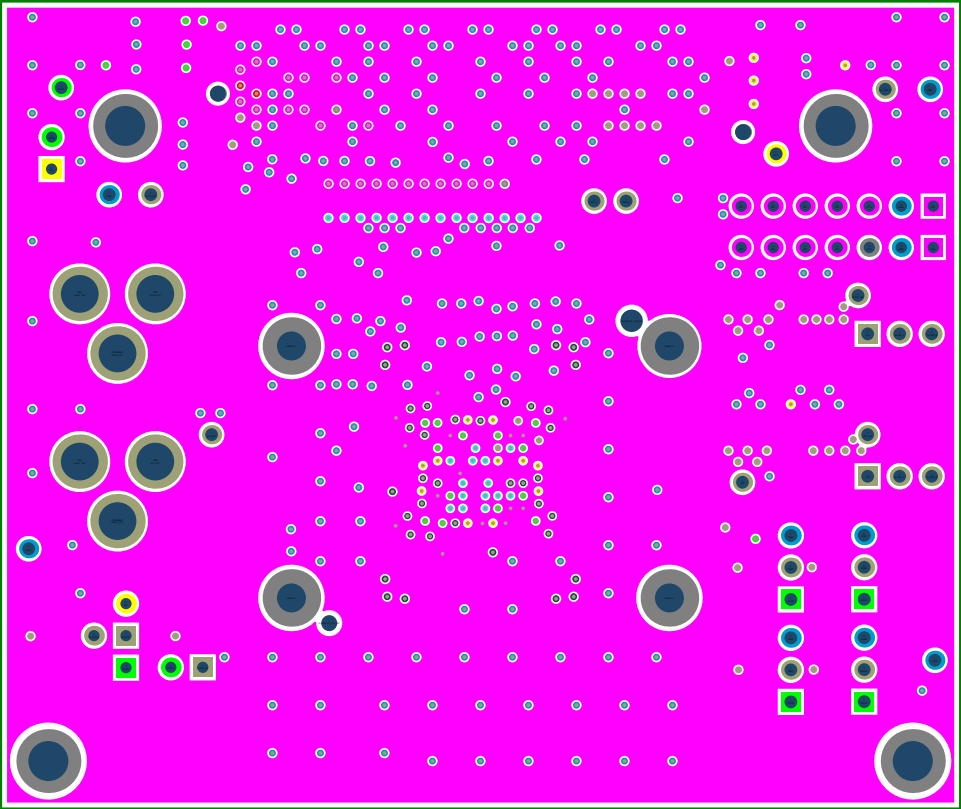
PROPRIETARY NOTICE  
THIS DOCUMENT/FILE AND THE TECHNICAL  
DATA HEREIN DISCLOSED ARE PROPRIETARY  
TO Q DESIGN AND SHALL NOT BE DUPLICATED  
USED, RELEASED, OR DISCLOSED IN  
WHOLE OR IN PART WITHOUT EXPRESSED  
WRITTEN PERMISSION.





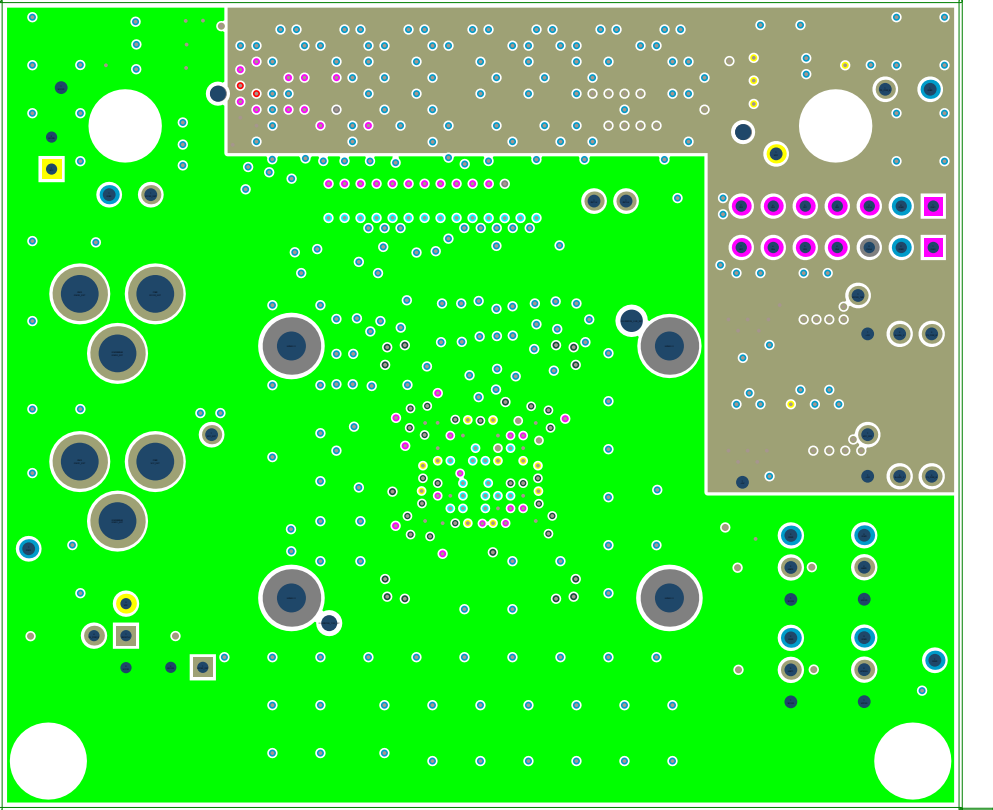
Title:	96BGA_XILINX REV.B
Customer:	
Contact:	
CUST P/N#:	
JOB#:	QDS11249_AVL (V0.9) GEN3
ENG./Designer:	
Scale:	1 TO 1
View:	TOP VIEW
DATE PLOTTED: 5/14/2024	
PADMASTER	DRILLMASTER
PWR2	

PROPRIETARY NOTICE  
THIS DOCUMENT/FILE AND THE TECHNICAL  
DATA HEREIN DISCLOSED ARE PROPRIETARY  
TO Q DESIGN AND SHALL NOT BE DUPLICATED  
USED, RELEASED, OR DISCLOSED IN  
WHOLE OR IN PART WITHOUT EXPRESSED  
WRITTEN PERMISSION.



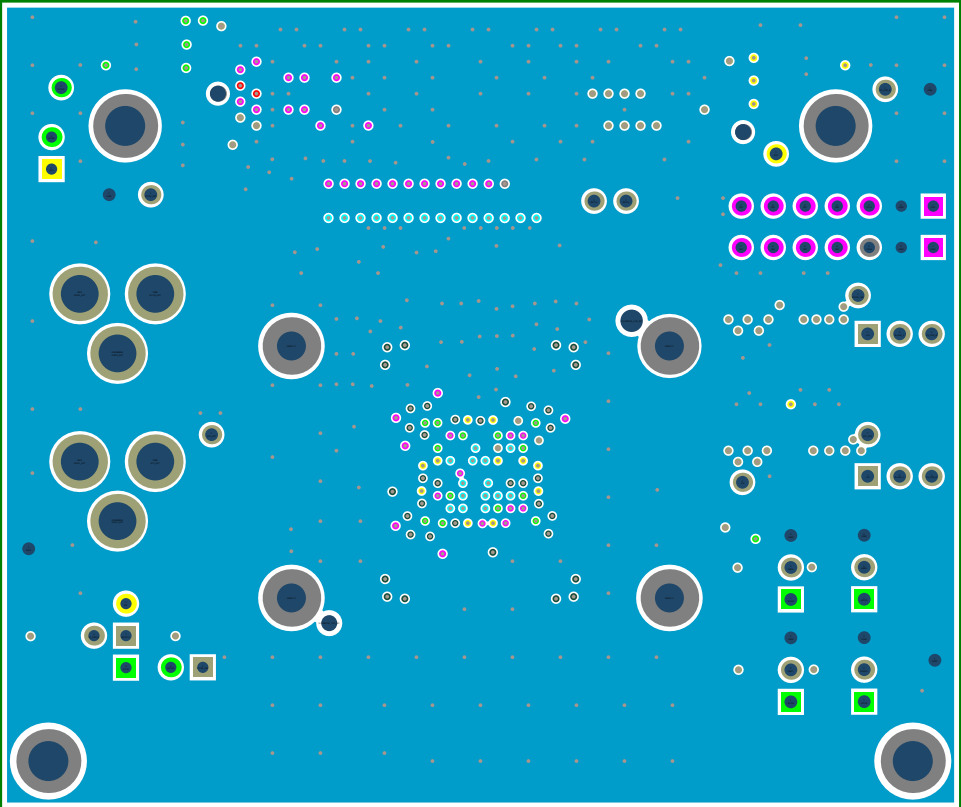
Title:	96BGA_XILINX REV.B
Customer:	
Contact:	
CUST P/N#:	
JOB#:	QDS11249_AVL (V0.9) GEN3
ENG./Designer:	
Scale:	1 TO 1
View:	TOP VIEW
DATE PLOTTED: 5/14/2024	
PADMASTER	DRILLMASTER
	GND3

PROPRIETARY NOTICE  
THIS DOCUMENT/FILE AND THE TECHNICAL  
DATA HEREIN DISCLOSED ARE PROPRIETARY  
TO Q DESIGN AND SHALL NOT BE DUPLICATED  
USED, RELEASED, OR DISCLOSED IN  
WHOLE OR IN PART WITHOUT EXPRESSED  
WRITTEN PERMISSION.



Title:	96BGA_XILINX REV.B
Customer:	
Contact:	
CUST P/N#:	
JOB#:	QDS11249_AVL (V0.9) GEN3
ENG./Designer:	
Scale:	1 TO 1
View:	TOP VIEW
DATE PLOTTED: 5/14/2024	
PADMASTER	DRILLMASTER
PWR3	

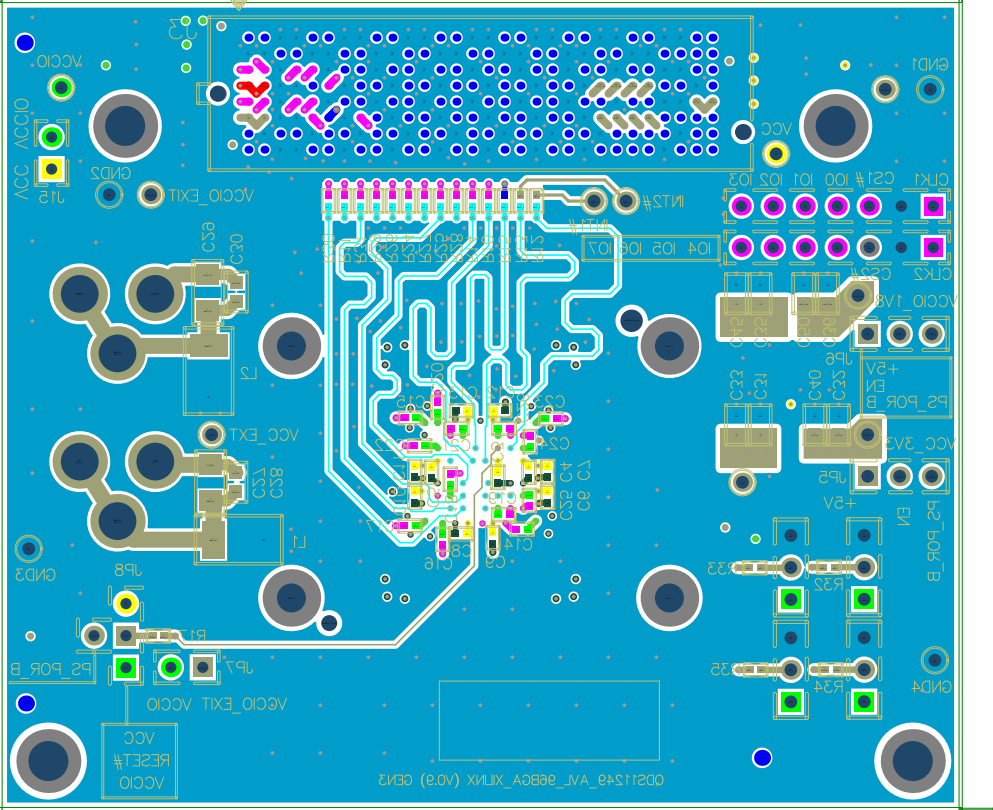
PROPRIETARY NOTICE  
THIS DOCUMENT/FILE AND THE TECHNICAL  
DATA HEREIN DISCLOSED ARE PROPRIETARY  
TO Q DESIGN AND SHALL NOT BE DUPLICATED  
USED, RELEASED, OR DISCLOSED IN  
WHOLE OR IN PART WITHOUT EXPRESSED  
WRITTEN PERMISSION.



Title:	96BGA_XILINX REV.B
Customer:	
Contact:	
CUST P/N#:	
JOB#:	QDS11249_AVL (V0.9) GEN3
ENG./Designer:	
Scale:	1 TO 1
View:	TOP VIEW

DATE PLOTTED: 5/14/2024	
PADMASTER	DRILLMASTER
	GND4

PROPRIETARY NOTICE  
THIS DOCUMENT/FILE AND THE TECHNICAL  
DATA HEREIN DISCLOSED ARE PROPRIETARY  
TO Q DESIGN AND SHALL NOT BE DUPLICATED  
USED, RELEASED, OR DISCLOSED IN  
WHOLE OR IN PART WITHOUT EXPRESSED  
WRITTEN PERMISSION.



Title:	96BGA_XILINX REV.B
Customer:	
Contact:	
CUST P/N#:	
JOB#:	QDS11249_AVL (V0.9) GEN3
ENG./Designer:	
Scale:	1 TO 1
View:	TOP VIEW
DATE PLOTTED: 5/14/2024	
PADMASTER	DRILLMASTER
	<b>BOTTOM</b>
	BOTTOM SILKSCREEN

PROPRIETARY NOTICE  
THIS DOCUMENT/FILE AND THE TECHNICAL  
DATA HEREIN DISCLOSED ARE PROPRIETARY  
TO Q DESIGN AND SHALL NOT BE DUPLICATED  
USED, RELEASED, OR DISCLOSED IN  
WHOLE OR IN PART WITHOUT EXPRESSED  
WRITTEN PERMISSION.